



2021
Catalogue

An ISO 9001:2015 Certified Company

Our Introduction

We “**Chawla Fire Protection Engineers Pvt. Ltd.**” are the biggest manufacturer and importer of fire fighting equipments and accessories from last 28 years. Our main aim is to satisfy all the customer demands with all positive results & we are backed up with stable infrastructure with all state of art equipments and efficient / motivated employees.

Our Motto

We are determined to stay ahead in the competitive market and serve our customers hassle free services in the business market.

We are also committed to give better quality standard fire protection products. Geared with modern technology and backed by an excellent team of experienced professionals, we also aim to provide total customer satisfaction.

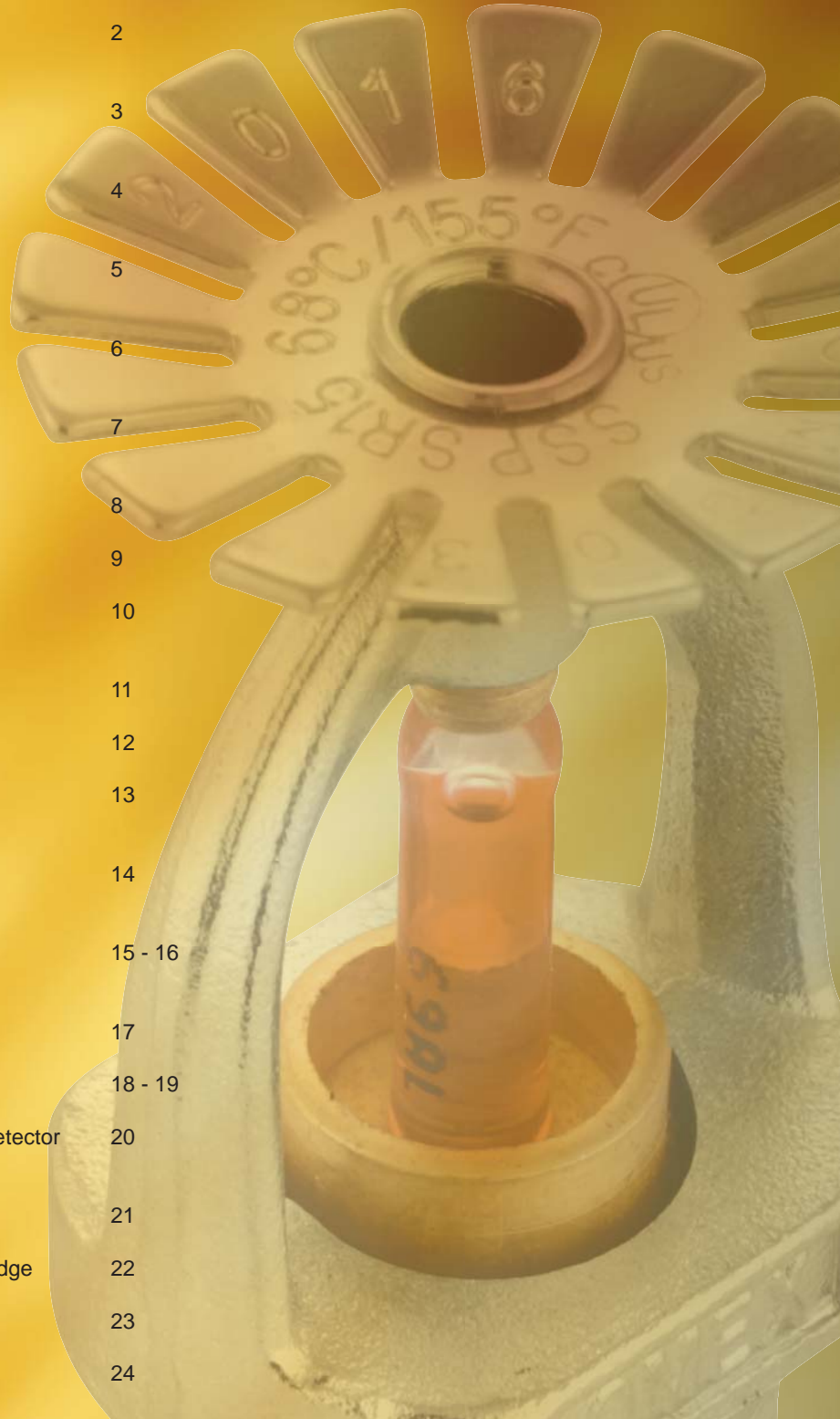
Our Quality Assurance

We “**Chawla Fire Protection Engineers Pvt. Ltd.**” quality has been the paramount objective since our inception and we maintain a strict quality policy for protecting customer’s integrity with us. Our quality control team inspects all the incoming raw material and releases our products into the market only when they match up to the specifications mentioned by our customers. Our quality control personnel also run quality checks and regularly examine the performance, durability and features of products as a whole. Implementing the best quality standards, we also maintain all therecords of material stage wise inspection, design and changes if any along with dispatch release notes.

Contents



Multipurpose Dry Powder Type (Stored Pressure)	1
Water Type Fire Extinguisher (Stored Pressure)	2
Dry Chemical Powder (Stored Pressure) Type Fire Extinguisher	3
M/Foam (Stored Pressure) Type Fire Extinguisher	4
DCP (Gas Cart.) Type Fire Extinguisher & Carbon-Di-Oxide Mobile Fire Extinguisher	5
M/Foam (Gas Cart.) Type Fire Extinguisher & W/CO ₂ (Gas Cart.) Type Fire Extinguisher	6
Kitchen Type Fire Extinguisher & Clean Agent (FK5-1-12/Novect123) Type Fire Extinguisher	7
Water CO ₂ (Trolley) Type Fire Extinguisher & M/Foam (Trolley) Type Fire Extinguisher	8
Carbon-Di-Oxide Mobile Fire Extinguisher	9
DCP (Trolley) Type Fire Extinguisher	10
Test & Drain Valve & Modular Automatic BC/ABC Dry Chemical Powder	11
Sprinklers (UL Listed)	12
Alarm Check Valve (UL Listed)	13
Compact Type (Malaysian) Hose Reel Drum	14
Hose For Fire Hydrant System (Fire Fighting Hose)	15 - 16
Fire Hose For Hydrant System (UL/ULC Listed)	17
Equipments For Fire Hydrant System	18 - 19
Escutcheon Plate For Sprinklers & Water Flow Detector	20
Equipments For Fire Fighting System & Accessories	21
Fire Fighting Chemicals, Refills & CO ₂ Gas Cartridge	22
Flexible Sprinkler Hose Fittings	23
Mobile Foam Unit	24



Multipurpose Dry Powder Type (Stored Pressure)

Suitable For **Class A, B, C & D** Fires Involving Combustible
Material Like Wood Paper, Cloth Flammable Gas
Liquid Petrol, Paints Solvents & Electricity
Started Fires & All Classes of Fire.



IS : 15683 : 2006



CM/L : 9335783



Description	BIS spec.	Discharge Time (Sec.)	Jet Length (Meters)	Test Pressure Kg/Cm ²
ABC - 1 Kg.	15683	6 - 8	2 - 3	35
ABC - 2 Kg.	15683	6 - 8	2 - 3	35
ABC - 4 Kg.	15683	6 - 8	6 - 7	35
ABC - 6 Kg.	15683	10 - 12	6 - 7	35
ABC - 9 Kg.	15683	12 - 18	6 - 7	35



Available in MAP 90%

IS : 15683 : 2006



CM/L : 9335783



Description	BIS spec.	Discharge Time (Sec.)	Jet Length (Meters)	Test Pressure Kg/Cm ²
ABC - 1 Kg.	15683	6 - 8	2 - 3	35
ABC - 2 Kg.	15683	6 - 8	2 - 3	35
ABC - 4 Kg.	15683	6 - 8	6 - 7	35
ABC - 6 Kg.	15683	10 - 12	6 - 7	35
ABC - 9 Kg.	15683	12 - 18	6 - 7	35

Water Type Fire Extinguisher (Stored Pressure)



Suitable For **Class A** Fires Involving Cumbustible Material of Organic Nature Such as Wood , Paper , Textile , Jute & Many Other Goods Etc.

IS : 15683 : 2006



CM/L : 9335783

Description	BIS spec.	Discharge Time (Sec.)	Jet Length (Meters)	Test Pressure Kg/Cm ²
Water Type 6 Ltr.	15683	40 - 50	6 - 8	35
Water Type 9 Ltr.	15683	50 - 60	6 - 8	35



IS : 15683 : 2006



CM/L : 9335783

Description	BIS spec.	Discharge Time (Sec.)	Jet Length (Meters)	Test Pressure Kg/Cm ²
Water Type 6 Ltr.	15683	40 - 50	6 - 8	35
Water Type 9 Ltr.	15683	50 - 60	6 - 8	35



Check Our Company Hologram For Original Product

Dry Chemical Powder (Stored Pressure) Type Fire Extinguisher

Suitable For **Class B & C** Fires Involving Flammable Material like Liquid Petroleum Products, Flammable Gases.
Also Work Effectively and Rapidly on Plastics & Electrical Fires.

IS : 15683 : 2006



CM/L : 9335783

Also Available in
ABC Powder - IS:4308 (Latest Edition)

Description	BIS spec.	Discharge Time (Sec.)	Jet Length (Meters)	Test Pressure Kg/Cm ²
DCP - 4 Kg.	15683	14 - 16	4 - 6	35
DCP - 6 Kg.	15683	16 - 18	4 - 6	35
DCP - 9 Kg.	15683	20 - 28	6 - 9	35



M/Foam (AFFF) Type Fire Extinguisher (Stored Pressure)

Advanced in Foam Technology



Suitable for **Class A & B** Fires Involving Flammable Liquid, Petroleum Products or where the Blanketing Effect is Essential.

IS : 15683 : 2006



CM/L : 9335783



Description	BIS spec.	Discharge Time (Sec.)	Jet Length (Meters)	Test Pressure Kg/Cm ²
AFFF - 6 Ltr.	15683	40 - 50	6 - 8	35
AFFF - 9 Ltr.	15683	50 - 60	6 - 8	35



Check Our Company Hologram For Original Product

Dry Chemical Powder (Gas Cartridge) Type Fire Extinguisher

Suitable For **Class B & C** Fires Involving Flammable material like Liquid Petroleum Products, Flammable Gases. Also work effectively and Rapidly on Plastics & Electrical Fires.



IS : 15683 : 2006



CM/L : 9335783

Also Available in
ABC Powder - IS:4308 & Potassium Powder- IS:4308

Description	BIS spec.	Discharge Time (Sec.)	Jet Length (Meters)	Test Pressure Kg/Cm ²	Gas Cart. used
DCP - 4 Kg.	15683	14 - 16	6 - 8	35	120 gms
DCP - 6 Kg.	15683	16 - 18	6 - 8	35	120/200 gms
DCP - 9 Kg.	15683	20 - 24	6 - 8	35	120/200 gms

Carbon-Di-Oxide Portable Fire Extinguisher

Suitable For **Class B** Fires Involving Material Like Fabric, Oil, Gases, Electric & Delicate Machineries.



IS : 15683



CM/L : 9335783

Description	BIS spec.	Discharge Time (Sec.)	Jet Length (Meters)	Test Pressure Kg/Cm ²
CO ₂ - 2 Kg.	15683	8 - 16	2	236
CO ₂ - 3 Kg.	15683	10 - 18	2	236
CO ₂ - 4.5 Kg.	15683	10 - 18	2.5	236

M/Foam (AFFF) Type Fire Extinguisher (Gas Cartridge)

Advanced in Foam Technology



Suitable for **Class A & B** Fires Involving Flammable Liquid, Petroleum Products or where the Blanketing Effect is Essential.



IS : 15683 : 2006



CM/L : 9335783

Description	BIS spec.	Discharge Time (Sec.)	Jet Length (Meters)	Test Pressure Kgf/Cm ²	Gas Cart. used
AFFF - 6 Ltr.	15683	15 - 20	6 - 8	35	60 gms
AFFF - 9 Ltr.	15683	20 - 25	6 - 8	35	60 gms

W/CO₂ Type Fire Extinguisher (Gas Cartridge)

Suitable For **Class A** Fires Involving Cumbustible Material of Organic Nature Such as Wood , Paper , Textile , Jute & Many Other Goods Etc.



IS : 15683 : 2006



CM/L : 9335783

Description	BIS spec.	Discharge Time (Sec.)	Jet Length (Meters)	Test Pressure Kgf/Cm ²	Gas Cart. used
W/CO ₂ - 6 Ltr.	15683	15 - 20	6 - 8	35	60 gms
W/CO ₂ - 9 Ltr.	15683	20 - 25	6 - 8	35	60 gms

Check Our Company Hologram For Original Product

Kitchen Type Fire Extinguisher

(Imported From SRI Malaysia)

Suitable For **Class A, B, C & K** Type Fires.

Description	Discharge Time (Sec.)	Jet Length (Meters)	Test Pressure Kg/Cm ²
K-Type - 1 Kg.	8 - 10	3 - 4	35
K-Type - 2 Kg.	8 - 10	3 - 4	35
K-Type - 4 Kg.	20 - 25	4 - 5	35
K-Type - 6 Kg.	30 - 35	4 - 5	35
K-Type - 9 Kg.	35 - 40	4 - 5	35



Clean Agent (FK 5-1-12/ Novec123 UL Listed Gas) Type Fire Extinguisher (CE Approved)

Suitable For **Class A, B, C & D** Fires Involving Combustible Material Like Wood Paper, Cloth Flammable Gas Liquid Petrol, Paints Solvents & Electricity Started Fires & All Classes of Fire.



ALSO AVAILABLE IN
AUTOMATIC MODULARS

Description	Discharge Time (Sec.)	Jet Length (Meters)	Test Pressure Kg/Cm ²
C/Agent - 1 Kg.	8 - 10	3 - 4	35
C/Agent - 2 Kg.	8 - 10	3 - 4	35
C/Agent - 4 Kg.	20 - 25	4 - 5	35
C/Agent - 6 Kg.	30 - 35	4 - 5	35
C/Agent - 9 Kg.	35 - 40	4 - 5	35

Water CO₂ Type Fire Extinguisher

CO₂ Gas Pressure & Gas Cartridge

Suitable For **Class A** Fires Involving Combustible Material Of Organic Nature Such As Wood , Paper , Textile , Jute & Many Other Goods Etc.



Capacity (Ltrs.)	Discharge Time (Sec.)	Jet Throw (Meters)	Water Discharge	Test Pressure Kg/Cm ²	Gas Cartridge Used/Cylinder
W/CO ₂ 50 Ltr.	60-180	10	95%	35	300gms./2 Kg.

M/Foam (AFFF) Type Fire Extinguisher

Advanced in Foam Technology

Suitable For **Class A & B** Fires Involving Flammable Liquid, Petroleum Products or where the Blanketing Effect is Essential.



Capacity (Ltrs.)	Discharge Time (Sec.)	Jet Throw (Meters)	Water Discharge	Test Pressure Kg/Cm ²	Gas Cartridge Used/Cylinder
M/Foam 50 Ltr.	40-180	10	90%	35	300gms./2 Kg.

Carbon-Di-Oxide Mobile Fire Extinguisher

Suitable For **Class B & C** Fires Involving Material Like Fabric, Oil, Gases, Electric & Delicate Machineries.

IS : 16018



CM/L : 9436991

Description	BIS spec.	Discharge Time (Sec.)	Jet Length (Meters)	Test Pressure Kgf/Cm ²
CO ₂ - 6.5 Kg.	16018	25 - 30	2.5 - 3	236
CO ₂ - 9 Kg.	16018	30 - 35	2.5 - 3	236
CO ₂ - 22.5 Kg.	16018	50 - 60	2.5 - 3	236



DCP (Trolley) Type Fire Extinguisher

Suitable For **Class B & C** Fires Involving Flammable material like Liquid Petroleum Products, Flammable Gases. Also work effectively and Rapidly on Plastics & Electrical Fires.



IS : 16018



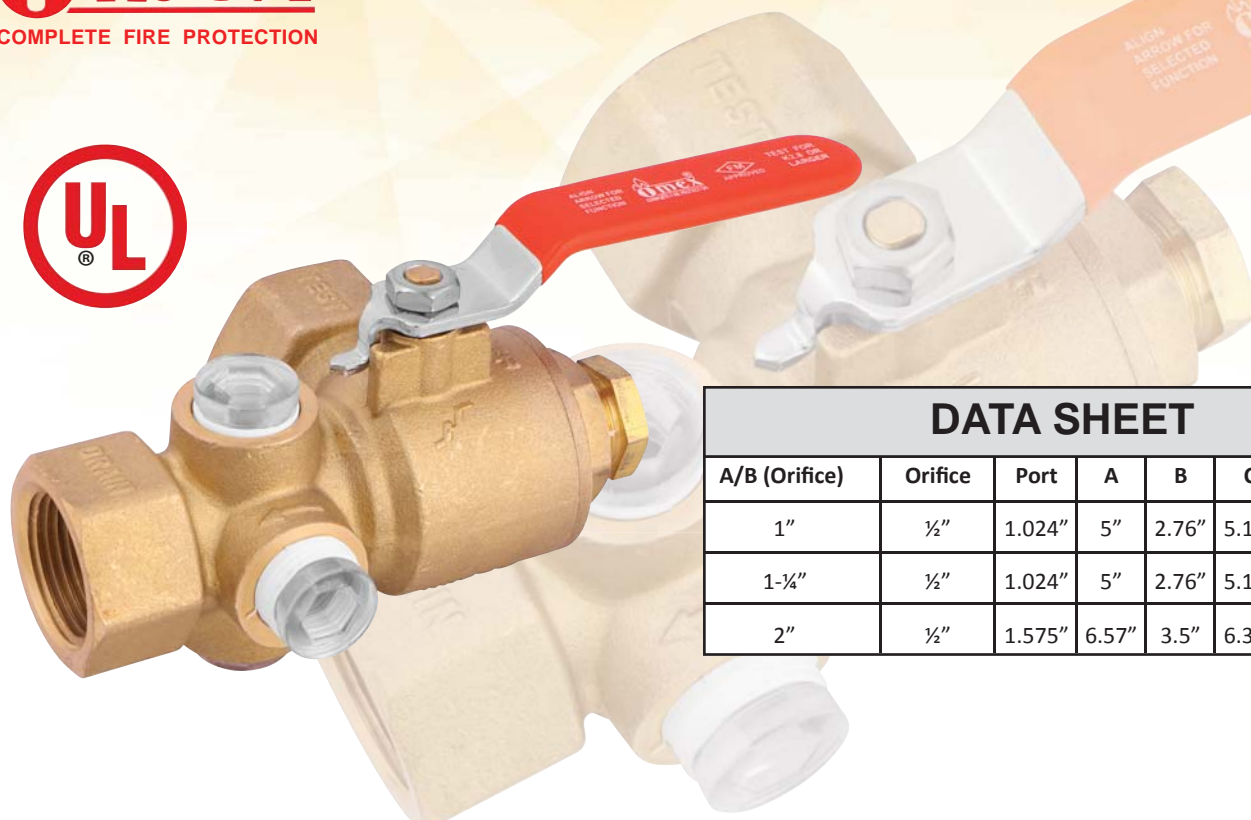
CM/L : 9436991

Capacity (Kg.)	Discharge Time (Sec.)	Jet Throw (Meters)	Discharge Qty. (Min")	Test Pressure Kgf/Cm ²	Gas Cartridge Used/Cylinder
DCP 25	25-30	6	80%	35	499 gms./2Kg.
DCP 50	40-50	8	85%	35	2 Kg.
DCP 75	50-60	10	85%	35	2 Kg.



Also Available in ABC Powder

Test & Drain Valve

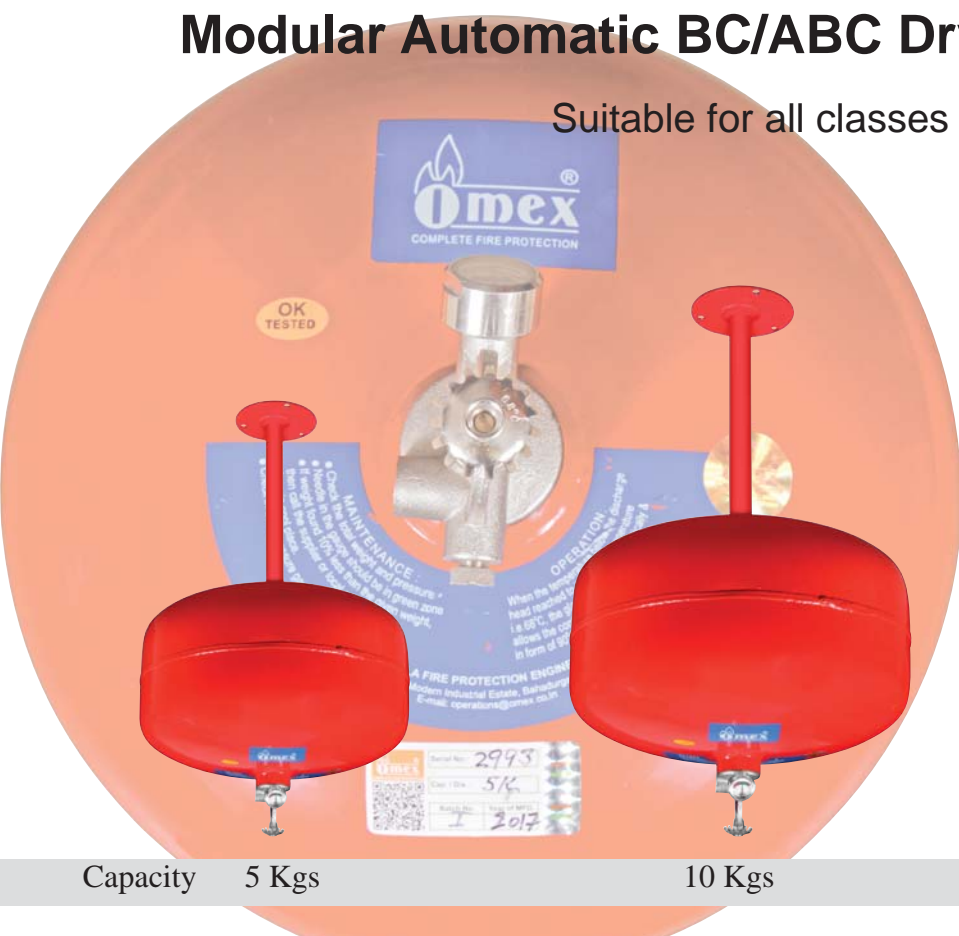


DATA SHEET

A/B (Orifice)	Orifice	Port	A	B	C	D	H
1"	½"	1.024"	5"	2.76"	5.16"	4.5"	1.65"
1-¼"	½"	1.024"	5"	2.76"	5.16"	4.5"	1.65"
2"	½"	1.575"	6.57"	3.5"	6.34"	5.8"	2.28"

Modular Automatic BC/ABC Dry Chemical Powder

Suitable for all classes of Fire

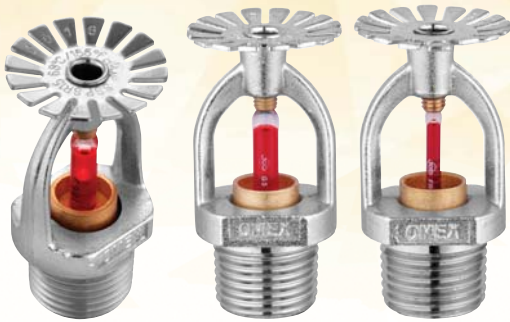


Capacity 5 Kgs

10 Kgs

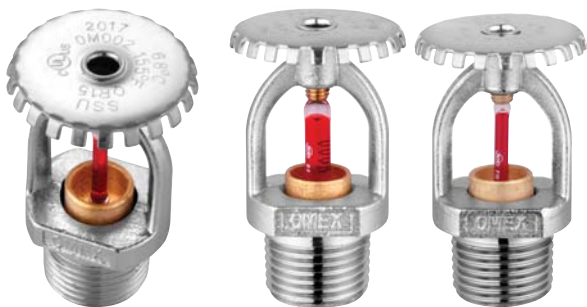
15 Kgs

UL Listed Automatic Sprinkler



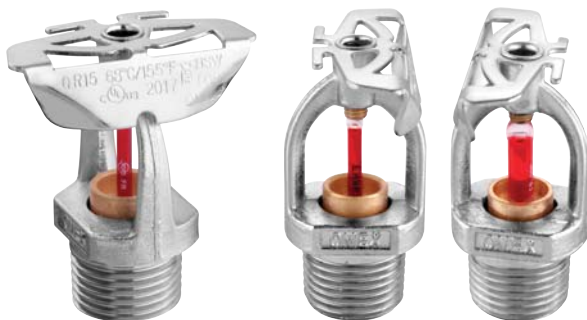
PENDENT TYPE SPRINKLER

Temperature Rating	: 155°F/68°C
Glass Bulb Colour	: Red
Thread Size	: NPT1/2" or R1/2"
Max. Service Pressure	: 175psi
Glass Bulb Diameter(mm)	: 05 / 03
Response	: SR / QR



UPRIGHT TYPE SPRINKLER

Temperature Rating	: 155°F/68°C
Glass Bulb Colour	: Red
Thread Size	: NPT1/2" or R1/2"
Max. Service Pressure	: 175psi
Glass Bulb Diameter(mm)	: 05 / 03
Response	: SR / QR



SIDEWALL TYPE SPRINKLER

Temperature Rating	: 155°F/68°C
Glass Bulb Colour	: Red
Thread Size	: NPT1/2" or R1/2"
Max. Service Pressure	: 175psi
Glass Bulb Diameter(mm)	: 05 / 03
Response	: SR / QR



CONCEALED TYPE SPRINKLER

Temperature Rating	: 155°F/68°C
Glass Bulb Colour	: Red
Thread Size	: NPT1/2" or R1/2"
Max. Service Pressure	: 175psi
Glass Bulb Diameter(mm)	: 05
Response	: SR

* Also Available in Various Temperature.

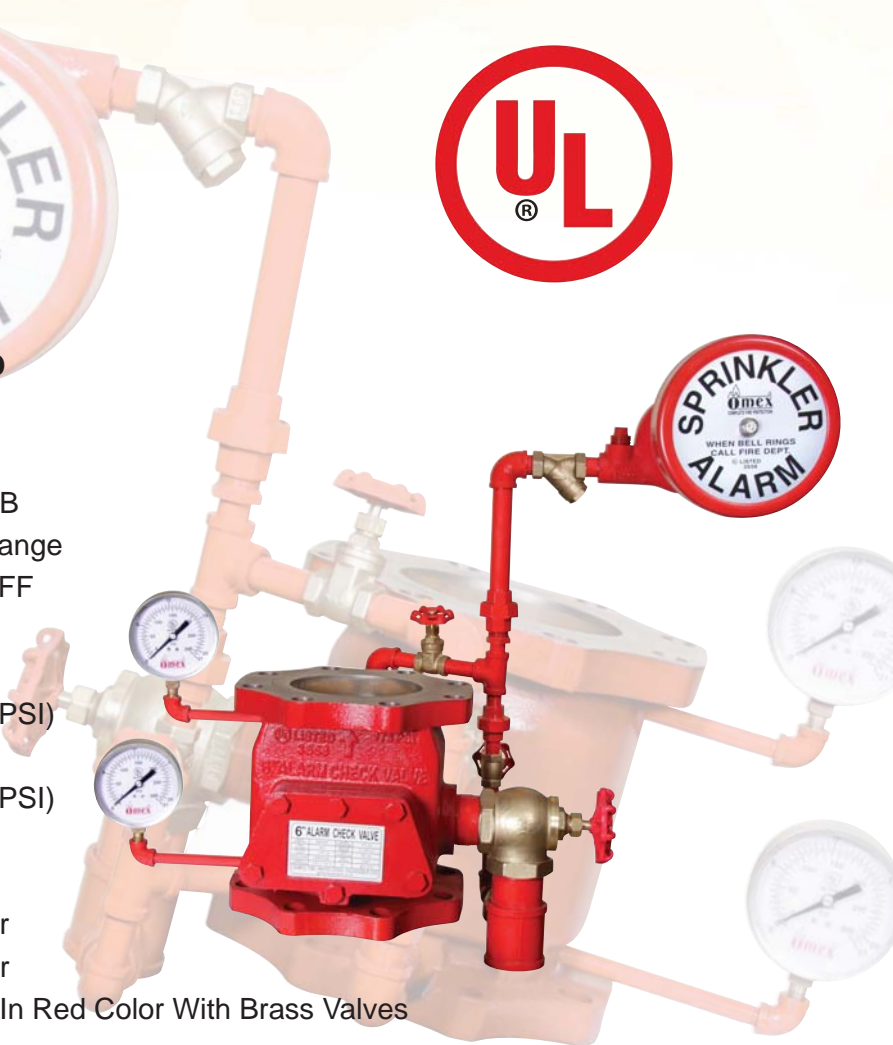
Alarm Check Valve

- Ductile Iron Body
- Simplified Trim
- Visible Pressure Gauge
- Stainless Steel Clapper
- Neoprene Rubber Seat
- Stainless Steel Rubber Clamp



Model

- Nominal Size 150 & 100 NB
- End Connection Flange To Flange
- Flange Connection ANSI B16.5 FF
- Mounting Vertical
- Maximum Service Pressure 12 Bar (175 PSI)
- Factory Hydrostatic Test Pressure 25 Bar (365 PSI)
- Frictional Loss In Terms of Equivalent Length of Pipe (C-120) 150 NB 7 Mtr
100 NB 6 Mtr
- Trim Steel Fitting In Red Color With Brass Valves
- Pressure Gauge 4 Inch
- Approximate Net Weight Without Trim 150NB - 35 Kg.
100NB - 22 Kg.
- Finish Fire Red Epoxy Painted.
- Approval UL - Listed



Data Sheet

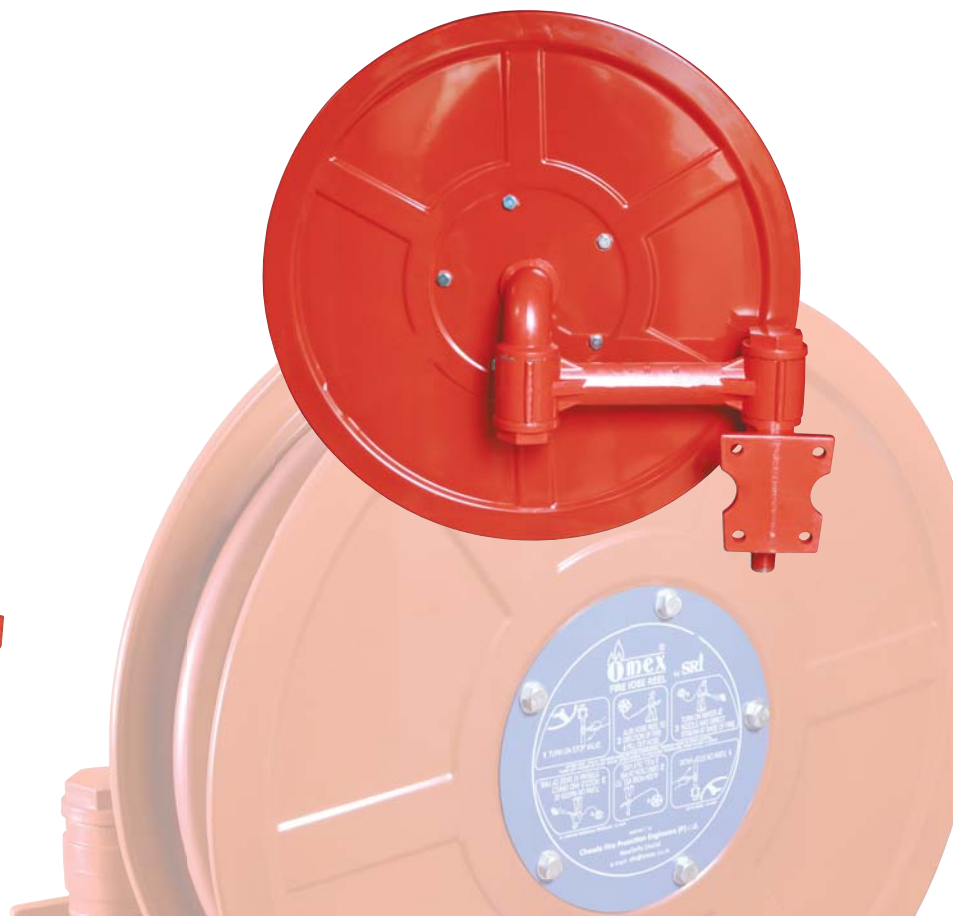
SIZE OF VALVE	INLET TYPE	OUT LET TYPE	FRICTION LOSS	SHIPPING WEIGHT	BOLT HOLE DIMENSION	NO OF BOLT HOLE
4"	FLANGE	FLANGE	6 Mtr	22 KG	21	8
6"	FLANGE	FLANGE	7 Mtr	35 KG	21	8

Compact Type (Malaysian) Hose Reel Drum



Key Features :

- Corrosion Free
- Leakage Free
- Rust Free
- Stores Less Space
- Type-II Pipe with Bursting Pressure of 42 kg/cm²
- Ready to Move (Pack)
- Powder Coated
- Light Weight
- 10 Years Warranty Against any Leakage Defect
- Comes Under CE, EN & KITEMARK® Approval



Hoses For Fire Hydrant System (Fire Fighting Hose)



IS : 636 Type - 1
(Latest Edition)



CM/L : 9711381



OMEX (R.R.L. HOSE)

Diameter	Bursting Pressure	Proof Pressure	Approx. Coil Dia (30M. Length)
M.M.	Kgf/Cm ²	Kgf/Cm ²	CM
38	35.7	21.4	44 - 45
50	35.7	21.4	44 - 45
63	35.7	21.4	44 - 45
70	35.7	21.4	44 - 45

Rein Forced Rubber Lined Fire Hose

OMEX (EXTRA COAT R.R.L. HOSE)

Diameter	Bursting Pressure	Proof Pressure	Approx. Coil Dia (30M. Length)
M.M.	Kgf/Cm ²	Kgf/Cm ²	CM
38	35.7	21.4	44 - 45
50	35.7	21.4	44 - 45
63	35.7	21.4	44 - 45
70	35.7	21.4	44 - 45



IS : 636 Type - 2
(Latest Edition)



CM/L : 9711381

Externally Coated Rein Forced Rubber Lined Fire Hose



IS : 8423



CM/L : 9783511

C.P. Hose

OMEX (C.P.HOSE)

Diameter	Bursting Pressure	Proof Pressure	Approx. Coil Dia (30M. Length)
M.M.	Kgf/Cm ²	Kgf/Cm ²	CM
38	35.7	21.4	44 - 45
50	35.7	21.4	44 - 45
63	35.7	21.4	44 - 45
70	35.7	21.4	44 - 45

Hose For Fire Hydrant System (Fire Fighting Hose)



RRL (ULTRAFLEX) SYNTHETIC HOSE TYPE-3

Key Features:

- *BIS Approved IS:636 Type-3
- *IRS Approved
- *CE Approved confirming to BS:6391 & BS-6391 Type-3
- *Internally Rubber lining combined with closely woven polyester fibre
- *Jacket made of multiply high density fibres
- *Synthetic rubber compound specially formulated for abrasion, Flexibility & low friction loss
- *Chemical resistance and protection against aging
- *Smooth inner lining surface with very low friction loss
- *Manufactured under **ISO:9001:2015** quality systems
- *Colours will be available as per customer/country requirement
- *Male-Female Couplings/Fittings will be available as per customer/country requirement
- *Different lengths of fire hose will be available as per customer/country requirement
- *Most effective for fire brigades, oil refineries, high pressure areas, petroleum industries
- *Maintenance free



IS : 636 Type - 3
(Latest Edition)
CM/L : 9711381



Colours Available



Description	Hose Size (in mm)	Test Pressure (in kg/cm ²)	Burst Pressure (in kg/cm ²)	Length Size (Meters)
RRL Type - 3	38mm	25.0	42.0	15/30
RRL Type - 3	50mm	25.0	42.0	15/30
RRL Type - 3	63mm	25.0	42.0	15/30
RRL Type - 3	70mm	25.0	42.0	15/30

Fire Hose For Hydrant System (UL/ULC Listed)

EPDM HOSE TYPE-1

Key Features:

- *UL / ULC Listed confirming to UL-19 Standard
- *Kuwait Civil Defence Approved
- *BIS Approved as per IS:636 Type-1
- *CE Approved confirming to BS:6391
- *100% Polyester Jacket for extra strength
- *Special EPDM Rubber Inner Lining for sustain heat & polluted water/sea water
- *Heat & Abrasion Resistance
- *Certified by TUV/SUD body
- *Manufactured under **ISO:9001:2015** quality systems
- *Outer jacket colours will be available as per customer/country requirement
- *Male-Female Couplings/Fittings will be available as per customer/country requirement
- *Different lengths of fire hose will be available as per customer/country requirement
- *Most effective for fire brigades, high rise buildings, power plants, steel plants, railways,



Colours Available



Description	Hose Size (in mm)	Test Pressure (in kg/cm ²)	Burst Pressure (in kg/cm ²)	Length Size (Meters)
Type - 1&2	38mm	21.4	35.7	15/30
Type - 1&2	50mm	21.4	35.7	15/30
Type - 1&2	63/65mm	21.4	35.7	15/30
Type - 1&2	70/73mm	21.4	35.7	15/30

Equipments For Fire Hydrant System



IS : 5290



CM/L : 9582295

SINGLE HEADED LENDING VALVE

Material	Gun Metal Grade LTB - 2, Stainless Steel & Aluminium
Size	63mm, 52mm, 38mm dia
63	Female single outlet type-"A" ISI
52	Female single outlet type "A"
38	Female single outlet type "A"
Performance	Hydraulic Test : 21 Kgf/cm ²
Water Test	Water tightness 14 Kgf/cm ²
Approval	ISI Marked from Bureau of Indian Standards (63mm)



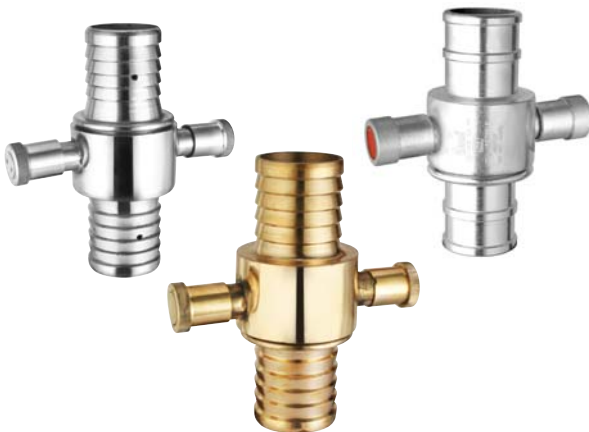
IS : 5290



CM/L : 9582295

DOUBLE HEADED LENDING VALVE

Material	Gun Metal Grade LTB-2, Stainless Steel & Aluminium
Size	63mm
63	Female single outlet type-"B" ISI
Performance	Hydraulic Test : 21 Kgf/cm ²
Water Test	Water tightness 14 Kgf/cm ²
Approval	ISI Marked from Bureau of Indian Standards (63mm)



IS : 903



CM/L : 9576910

FIRE HOSE DELIVERY COUPLING

Material	Gun Metal Grade LTB-2, Stainless Steel & Aluminium
Size	63mm, 52mm, 38mm dia
Performance	Hydraulic Test : 21 Kgf/cm ²
Water Test	Water tightness : 14 Kgf/cm ²
Approval	ISI Marked from Bureau of Indian Standards (63mm)

SHORT BRANCH PIPE WITH NOZZLE

Material	Gun Metal Grade LTB-2, Stainless Steel & Aluminium
Size	63mm, 52mm, 38mm dia
Nozzle	12mm to 20mm dia for ISI marked
Performance	Hydraulic Test : 21 Kgf/cm ²
Water Test	Water tightness : 14 Kgf/cm ²
Approval	ISI Marked from Bureau of Indian Standards (63 mm)

IS : 903



CM/L : 9576910



Equipments For Fire Hydrant System



TWO WAY FIRE BRIGADE CONNECTION

Size 63mm dia
Material Gun Metal/SS & Cast Iron Body
Performance Hydraulic Test : 21 Kgf/cm²



THREE WAY FIRE BRIGADE CONNECTION

Size 63mm dia
Material Gun Metal/SS & Cast Iron body
Performance Hydraulic Test : 21 Kgf/cm²



FOUR WAY FIRE BRIGADE CONNECTION

Size 63mm dia
Material Gun Metal/SS & Cast Iron Body.
Performance Hydraulic Test : 21 Kgf/cm²

Escutcheon Plate For Sprinklers



ESCUTCHEON PLATE FOR SPRINKLERS

Material : Mild Steel
Gauge : 16 G
Type : Dual Type (2 pcs)
Dia : 20 mm
UL File No. : EX-15497
Finish : Chrome / Powder Coated



WEFLO

Water Flow Detector (Saddle Type)



Size	Nominal Working Pressure (Mpa)	Delay Time (S)	Sensitivity (L/min)	Special Feature
4"	1.2	2-90	15<Q<37.5	CE Approved
6"	1.2	2-90	15<Q<37.5	CE Approved

All Water flow indicator comes under one year replacement warranty & all imported from Korea.

Equipments For Fire Fighting System & Accessories



DRAW OUT CONNECTION

Size 100mm
Performance Hydraulic Test : 21 kgf/cm²
Material Gun Metal & Cast Iron



HOSE BOX

Available in MS & ABS Body.
All sizes available according to the requirement.
Single Door 15 Mtr.
Single Door 30 Mtr.



HOSE BOX

Available in MS & ABS Body.
All sizes available according to the requirement.
Double Door



WATER MONITOR

Size 63mm dia
Body Welded from MS/SS Seamless Pipe B
Range 50 to 60 mtrs.
Flow 1750 to 4000 LPM
Rotation 360°



FOAM MONITOR

Size 63mm dia
Body Welded from MS/SS Seamless Pipe Bends
Range 50 to 60 mtrs.
Flow 1750 to 4000 LPM
Rotation 360°
Nozzle FB10X

Fire Fighting Chemicals & Refills



IS : 4308
(Latest Edition)



CM/L : 9498613

SUITABLE FOR **CLASS A, B & C** FIRES INVOLVING COMBUSTIBLE MATERIAL LIKE WOOD PAPER, CLOTH FLAMMABLE GAS LIQUID PETROL, PAINTS SOLVENTS, ELECTRICITY STARTED FIRES & ALL CLASSES OF FIRE.



IS : 4308
(Latest Edition)



CM/L : 9498613

SUITABLE FOR **CLASS B & C** FIRES INVOLVING COMBUSTIBLE MATERIAL LIKE WOOD PAPER, CLOTH FLAMMABLE GAS LIQUID PETROL, PAINTS SOLVENTS, ELECTRICITY STARTED FIRES & ALL CLASSES OF FIRE.



IS : 4989 : 2018



CM/L : 2648365

SUITABLE FOR **CLASS A & B** FIRES INVOLVING FLAMMABLE LIQUID, PETROLEUM PRODUCTS OR WHERE THE BLANKETING EFFECT IS ESSENTIAL.

CO₂ Gas Cartridge



IS : 4947



CM/L : 9326681

Description	BIS spec.	Testing Pressure
40 Gms.	4947	236 Kgf/Cm ²
60 Gms.	4947	236 Kgf/Cm ²
120 Gms.	4947	236 Kgf/Cm ²
200 Gms.	4947	236 Kgf/Cm ²
300 Gms.	4947	236 Kgf/Cm ²

TECHNICAL DATA

Available product length and type	700mm to 1800 (28" to 70")
Available square bar length	700mm to 1500 (28" to 59")
Max. working pressure	14kgf/cm ² (200psi)
Max. ambient temperature	107°C (225°F)
Minimum installation Bending Radius	75mm (3")
Bending Angles (Flow Direction)	up to 180 Degree
Largest K factor for 1/2 inch outlet	5.6[gpm/(psi) ^{1/2}]
Largest K factor for 3/4 inch outlet	14.0[gpm/(psi) ^{1/2}]
Intended use	Wet system and dry system

* Also available of braided type flexible drop.



Mobile Foam Unit



The Omex Mobile Foam Unit is highly deployable fire protection apparatus designed for operation by one person. Connection to a suitable water source, such as fire pump or pressurized fire hydrant valve using a fire hose connected to inlet of inductor while another to the inlet of the low expansion foam branchpipe, the unit is ready for use.

General Specifications

Trolley	: Steel EPE Powder Coating
Tank	: Fibre Glass or Stainless Steel
Inductor	: 0% - 6% at 225 Lt/Min
Foam Branchpipe	: Aluminum Alloy Male Instantaneous Connection to BS 336
Hose	: One/Two length of 63mm X 15 meter Fire Hose



Description

Fibreglass Tank with Standard Equipment

Stainless Steel Tank with Standard Equipment

Input Pressure Bar	Total (Water Flow) (Lt/min)	Approx Runing Time Inductor Setting (per minute)		Approx Foam Throw Branchpipe low expansion
		3%	6%	
5	182	22	11	15
7	215	18	9	18
10.	225	16	8	20

4th Edition : JANUARY 2021

Manufactured in India By :

Chawla Fire Protection Engineers Pvt. Ltd.

AN ISO 9001 : 2015 CERTIFIED COMPANY

AN UL/ULC CERTIFIED COMPANY

New Delhi - 110083 (INDIA)

Website : www.omex.co.in

E-mail : operation@omex.co.in